

**IT'S A CRIME SCENE! IT'S A NIGHTMARE!
IT'S A BLOOD BATH! IT'S A FRIGHT!
...BUT IT'S JUST US GIRLS!**

LIZZIE

BENEFIT FOR

LEGAL VOICE

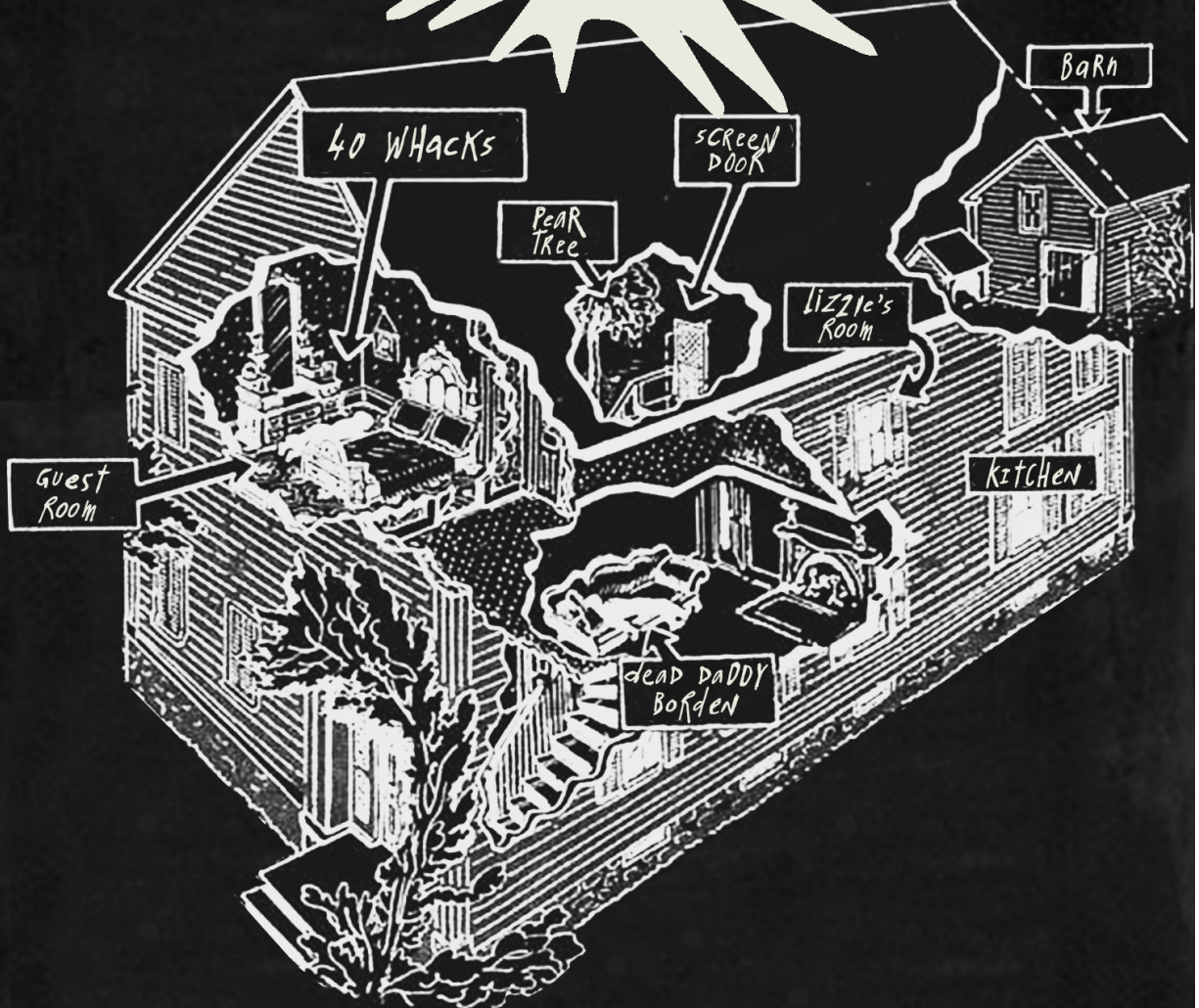
a
PULLMAN.
VS. PAXTON

PRODUCTION

PULLMANVSPAXTON.ORG

SEPTEMBER 27TH
- OCTOBER 5TH
BAR W/ID
BROADWAY PERFORMANCE HALL
\$30 ADV

BOOK, MUSIC, & LYRICS BY
STEVEN CHESLIK-DEMETER,
TIM MANER
ALAN STEVENS &
HEWITT





REAL IMPORTANT!

LAND ACKNOWLEDGEMENT

WE WOULD LIKE TO ACKNOWLEDGE THAT OUR WORK IS PRODUCED AND DISTRIBUTED ON THE TRADITIONAL AND CONTEMPORARY LANDS OF THE FIRST PEOPLE OF SEATTLE, THE DUWAMISH PEOPLE PAST AND PRESENT, AND HONOR WITH GRATITUDE THE LAND ITSELF AND THE DUWAMISH TRIBE.

**WE ENCOURAGE YOU TO CONSIDER DONATING TO
[HTTPS://WWW.REALRENTDUWAMISH.ORG/](https://www.realrentduwamish.org/).**

NOTE TO AUDIENCE

THE VIDEOTAPING OR AUDIO AND/OR VISUAL RECORDING OF THIS PRODUCTION IS A VIOLATION OF UNITED STATES COPYRIGHT LAW AND AN ACTIONABLE FEDERAL OFFENSE.

ADVISORY/CONTENT WARNING

LIZZIE CONTAINS USE OF FLASHING LIGHTS, FOG/HAZE, SIMULATED MURDER, FAKE BLOOD AND GORE, PROFANITY, IMPLIED SEXUAL ABUSE/INCEST, MENTION OF ANIMAL DEATH, & GUITAR-DRIVEN ROCK MUSIC.

GOTTA GET OUT!

**RUN TIME: APPROX 1 HR 45 MIN
INCLUDING 20 MIN INTERMISSION**

ACT ONE

- 01 FORTY WHACKS [PROLOGUE]**
- 02 HOUSE OF BORDEN**
- 03 THIS IS NOT LOVE**
- 04 GOTTA GET OUT OF HERE**
- 05 IF YOU KNEW**
- 06 THE SOUL OF THE WHITE BIRD**
- 07 MAYBE SOMEDAY**
- 08 "THE WILL"**
- 09 SWEET LITTLE SISTER**
- 10 SHATTERCANE & VELVET GRASS**
- 11 "THE MILK"**
- 12 WILL YOU STAY**
- 13 WHY ARE ALL THESE HEADS OFF?**
- 14 MERCURY RISING**
- 15 SOMEBODY WILL DO SOMETHING**

ACT TWO

- 16 FORTY WHACKS [ENTR'ACTE]**
- 17 THE FALL OF THE HOUSE OF BORDEN**
- 18 WHAT THE FUCK NOW, LIZZIE?!**
- 19 "THE DRESS"**
- 20 BURN THE OLD THING UP**
- 21 QUESTIONS QUESTIONS**
- 22 WILL YOU LIE?**
- 23 WATCHMEN FOR THE MORNING**
- 24 MAYBE SOMEDAY [REPRISE 1]**
- 25 THIRTEEN DAYS IN TAUNTON**
- 26 MAYBE SOMEDAY [REPRISE 2]**
- 27 INTO YOUR WILDEST DREAMS**

ABOUT PULLMAN.VS.PAXTON PRODUCTIONS

Pullman.vs.Paxton Productions is a 501c3 non-profit collective of musicians, artists, and event producers. Our artistic selections speak to our vision of what a theater-going experience should be in 2024 – uninhibited and disruptive. Rule breaking. As an extension of our artistic mission, we make sure to donate our proceeds from each production to LGBTQIA+ non-profit organizations.

We ask that whether you are in a stage seat, tuning in from home, or swaying in the back – you choose how you interact with us - rock out with us, learn the tunes, yell shit at us, allow yourself to be a part of our show and we will be a part of your memories. It is there that our ambition is born.

ABOUT LEGAL VOICE

At Legal Voice, We believe that all women and LGBTQ people should be able to live their lives with dignity, safety, and autonomy. To this end, we work in the Northwest's courtrooms, legislatures, and communities – creating and enforcing strong, equitable laws and empowering people to know their rights.



**WHERE YOU
\$\$\$ IS GOING**



MUSIC BY STEVEN CHESLIK-DEMEYER & ALAN STEVENS HEWITT
LYRICS BY STEVEN CHESLIK-DEMEYER & TIM MANER
BOOK BY TIM MANER **ADDITIONAL MUSIC BY TIM MANER**
ORCHESTRATIONS & ADDITIONAL LYRICS BY ALAN STEVENS HEWITT
BASED ON AN ORIGINAL CONCEPT BY
ALAN STEVENS HEWITT & TIM MANER

CREATIVE TEAM

DIRECTOR/SET/COSTUMES:
GEORGINA SPELVIN

MUSIC DIRECTOR/SOUND: DUSTIN SCHISLER

LIGHTING DESIGN: MAX WESSON

HEAD CHEERLEADER:
SHANE PATRICK HOFFMANN



CAST

LIZZIE BORDEN:

KATRINA ROSE AGNEW

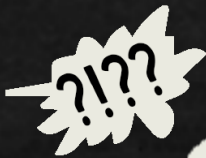
EMMA BORDEN: NOAH FILISTOWICZ

ALICE RUSSELL: AMY LAMKEN

BRIDGET SULLIVAN:

KAELYN LANGER MENDONCA

MAKEUP BY KATRINA
ROSE AGNEW



BAND

GUITAR 1: MATT GREISEN

GUITAR 2/KEYS 2: JOSH ZIMMERMAN

BASS: JADE TEATHER

DRUMS: MANUEL [TAI] KAHINU-TAITANO

KEYS: DR. WILLIAM BRYANT

VIOLA: CHRISTINA CASTELLO

What does it take to make a legend? I would wager that it doesn't matter that most of the stories are inconceivable as history; what is important is that they are believed.

“On its face, this story is the opposite of a fairytale. But that's only until you consider what fairytales are really about. Girls punished for selfishness or for no reason at all. They're tales of horror. And wonder. Of innocence and beauty. Of violence and sin. In fairytales, there's danger everywhere...”

This quote comes from Rebecca Godfrey's “Under The Bridge” - another piece on the weight of female violence that I engaged with early on in this process. It clung to me.

Every journalist, writer, historian, and true crime aficionado mining for truths and revelations has had a hand in constructing Lizzie Borden's reality for public consumption. She's a glorified urban legend. This sort of poster child that absorbs and accommodates ever changing social perceptions.

She carries the weight of our fears and fantasies. There is no “original” or “real” or “right”, only variants. A legend. A fairytale. She is not finished; we never arrive, but keep moving toward her. The story continues.

To Lizzie.



DIRECTOR'S NOTE

MEET THE TEAM

MRS.

BORDEN

R.I.P.



Katrina Rose Agnew returns to the stage after taking six long years off. She's grateful to have found her voice once more, thanks to an incredible team and an incredible show. Lizzie has been the most challenging and rewarding role she has ever had the privilege of taking on. She feels lucky and in awe to have worked with such an amazing director and music director. They gave her the safe space to creatively explore and push herself, beyond what she had ever done in the past. Katrina applauds the bravery in every artist who dares to create. Whether you direct, sing, act or just attend shows. Art is expansive and profound. Art is for us all. You can keep up with Katrina's artistic adventures (and several dog photos) on Instagram at [Kat_rinaRoseAgnew](#).

KATRINA
ROSE
AGNEW



PHOTO: ANDREA MICHELLE PHOTOGRAPHY

Noah Filistowicz, known for his work with wrestle yr friends, is ecstatic to be returning to the stage as Emma Borden after nearly a decade long hiatus from the theatre. As a child, he was told to “just stop singing” because of his low voice—his work with Georgina and Dustin has blown this old belief apart and invited him to create again in ways he didn’t think possible. When not convincing his little sister to commit bloody murder, he can be found facilitating conflict resolution through hands thrown, making *something* (this week sewing button up shirts, next week chainmailing a suit of armor), or complaining and being a general nuisance.



PHOTO: ANDREA MICHELLE PHOTOGRAPHY

NOAH
FILISTOWICZ

Amy (she/her) is thrilled to be on stage again after more than a decade. She has loved performing since she was young, and joining Pullman.vs.Paxton has been an incredible re-introduction into theatre arts. She would like to thank her partner, Chanel, for being the most supportive stage girlfriend there ever has been. She would also like to thank Georgina for trusting her with the role of Alice. Your coaching, creative vision, resources, and patience is unmatched. Thank you, Dustin, for keeping us on our 2s, and to Shane for always cheerleading us. A special dedication to Amy's biggest inspiration, Alice Lamken. Now, enjoy the bloody show.



PHOTO: ANDREA MICHELLE PHOTOGRAPHY

AMY LAMKEN

Kaelyn Langer Mendonca is stoked to be part of this production of Lizzie under the brilliant vision of P.V.P and sharing the stage with Katrina, Amy, and Noah. Over the last 30+ years she has worked as an actor, director, arts administrator, educator, and artistic leader (she also has her PhD but whatevs) Her passion lies in creating complex characters and telling important stories that resonate with audiences. A native New Yorker and now based in Seattle, Kaelyn thrives in collaborative, open, and brave spaces. Thank you to Bud, Moose, Lou, Meems, and J & D.

Let's make cool shit together! @kaelyn_acts



PHOTO: ANDREA MICHELLE PHOTOGRAPHY

KAELYN
LANGER
MENDONCA

DR. WILLIAM BRYANT
[KEYBOARD 1]

Dr. William Bryant is currently the Director of Music Ministries at Faith Lutheran Church Redmond as well as music instructor at Music & Arts Bellevue and Emerald City Music Makers Seattle. After receiving his doctorate in organ at the University of Washington, Dr. Bryant has settled permanently in the Seattle area going on 11 years. He is also a woodwind doubler, primaries being oboe and clarinet, and you will see him in a variety of pit orchestra roles in musical productions around the area.

CHRISTINA CASTELLO
[VIOLA]

Christina Castello journeyed into the realm of rock viola after completing her BMA from PLU. As a founding member of the psych garage project Dream Logic, she's grown to love gritty shows, intricate riffs, and hair flips. With a soft spot for nature walks and a good roux, she's currently funneling moments of introspection into her solo project, Peach Fangs.

MATT GREISEN
[GUITAR 1]

Matt Greisen is a guitar teacher from Seattle, sharing their love for music with students of all skill levels. They are currently performing in their second musical, continuing to explore new creative opportunities in the performing arts.

**JADE TEATHER
[BASS]**

Jade Teather is a multi-instrumentalist with a wide range of musical passions. Having completed her degree in Instrumental Music Education at Concordia College in Minnesota, she currently teaches K-5 General Music in the public school system. When she's not teaching music and working with young learners, she can be found performing as a solo singer-songwriter act accompanying herself on guitar or piano, fronting indie pop band No Monaco, or playing bass in a variety of settings. Her debut EP, *Melomania*, was released in 2018 on Spotify, iTunes, and anywhere else you listen to music. In addition to her passion for performing, writing, and recording music, Jade is passionate about teaching music, working with young students, and sharing a love of music with others.

**JOSH ZIMMERMAN
[GUITAR 2/KEYBOARD 2]**

Josh Zimmerman is grateful to join this amazing pit! He is a recipient of the Broadway World Seattle and Gypsy Rose Lee awards for music direction. Recent credits include *AMD/Keys 2 for GREASE: das Musical* (Musical Tommy GmbH) and Children's Music Director for the first national tour of Andrew Lloyd Webber's *SCHOOL OF ROCK* (Troika). He maintains a private studio and accompanies for Cornish College of the Arts and Pacific Northwest Ballet.

**MANUEL [TAI] KAHINU-TAITANO
[DRUMS]**

YOU GET A SHIVER IN THE DARK
IT'S A RAINING IN THE PARK BUT MEANTIME-
SOUTH OF THE RIVER YOU STOP AND YOU HOLD EVERYTHING
A BAND IS BLOWING DIXIE, DOUBLE FOUR TIME
YOU FEEL ALRIGHT WHEN YOU HEAR THE MUSIC RING
WELL NOW YOU STEP INSIDE BUT YOU DON'T SEE TOO MANY FACES
COMING IN OUT OF THE RAIN THEY HEAR THE JAZZ GO DOWN
COMPETITION IN OTHER PLACES
UH BUT THE HORNS THEY BLOWIN' THAT SOUND
WAY ON DOWN SOUTH
WAY ON DOWN SOUTH
LONDON TOWN
YOU CHECK OUT GUITAR GEORGE, HE KNOWS-ALL THE CHORDS
MIND, IT'S STRICTLY RHYTHM HE DOESN'T WANT TO MAKE IT CRY
OR SING
THEY SAID AN OLD GUITAR IS ALL, HE CAN AFFORD
WHEN HE GETS UP UNDER THE LIGHTS TO PLAY HIS THING
AND HARRY DOESN'T MIND, IF HE DOESN'T, MAKE THE SCENE
HE'S GOT A DAYTIME JOB, HE'S DOING ALRIGHT
HE CAN PLAY THE HONKY TONK LIKE ANYTHING
SAVIN' IT UP, FOR FRIDAY NIGHT
WITH THE SULTANS
WE'RE THE SULTANS OF SWING...

Oh. And. This Spicy Boy has been playing up and down the PNW for 20 years. Tai wants to use his skills to help amplify other voices that people are less willing to listen to...

STEVEN CHESLIK-DEMEYER

Fresh out of art school in the early '80s, Steven Cheslik-deMeyer bought a used guitar in a junk shop on St. Marks Place, learned three chords, and taught himself to write songs by listening to Dolly Parton records. He insinuated himself into the post-punk neo-folk scene in the East Village, but soon discovered the world of downtown theater. Through the late '80s and early '90s, he wrote and performed music in several experimental productions with Tiny Mythic Theatre Company and directors Kristin Marting and Tim Maner. In 1992, he and Jay Byrd created an act called Y'all, singing original songs and telling stories in the style of old-time country vaudeville. The act sprang from the downtown theater scene but went on to play in coffeehouses, churches, retirement homes, and rock clubs across the U.S., Canada, and Europe. In ten years, Y'all recorded four CDs, published two books, appeared on MTV and Comedy Central, and went broke. Their last two years together, they lived in a camper on the road with a third partner. Steven made a documentary about that relationship and the final years of Y'all, *Life in a Box*, which premiered in the San Francisco International Film Festival in 2005. After the demise of Y'all, Steven returned to New York where he continues to make music and theater and musical theater. He is a 2019 Jonathan Larson Grant finalist, a MacDowell Fellow, and a graduate of the University of Texas at Austin with a degree in American Studies. For more information, go to stevencheslikdemeyer.com.

ALAN STEVENS HEWITT

Alan Stevens Hewitt (ASH) grew up in a musical family, the son of a Philadelphia Orchestra oboist. He cut his teeth as a teenager recording for Ruffhouse/Columbia Records at Studio 4 in Philly, and during the '90s as member of alt-folk band The Low Road (Caroline Records), touring with Los Lobos, Barenaked Ladies, and label-mates Ben Folds Five.

He moved full-time to New York City in the late '90s to pursue his conservatory degree in Composition at Mannes College of Music/The New School, where he studied with Robert Cuckson and Carl Schachter. In the mid-aughts, with partners, he opened The Coral Room, a nightclub in the Chelsea section of Manhattan, which featured a 10,000 gallon saltwater aquarium with live "mermaid" performances and hosted cutting edge bands, performance artists, events, and DJs nightly. As an actively performing musician, his credits include Broadway's Frozen, Come From Away, The Band's Visit, Fun Home (also 1st Natl. Tour), Finding Neverland, Matilda, Sting's Last Ship, Rocky, Jekyll & Hyde, Lysistrata Jones, Green Day's American Idiot, Spring Awakening (also 1st Natl. Tour), Off-Bway's Closer Than Ever, RENT, tours in the U.S. and abroad, and numerous recordings as a player, composer, arranger, and producer. His first score for theatre was for a production of Bertolt Brecht's Baal that The New York Times thought was awful. He lives in the Lower Hudson Valley and enjoys motorcycles and longboarding.

TIM MANER

Right out of college, Tim Maner co-founded the tiny mythic theatre company with a focus on developing the work of creator/directors and a mission to “disrupt the american living room / rearrange the furniture in the american mind”. tiny mythic’s work became a staple of the downtown alt-theatre scene of the early ’90s, and just a few years later, the previously transient company transformed into the award-winning New York City arts center, HERE, called “One of the most unusual arts spaces in New York – and possibly the model for the cutting edge arts space of tomorrow” by The New York Times. His producing/presenting history at HERE included hundreds of productions brought to life by thousands of artists. He remains an active founding board member working to expand opportunities for mid-career artists. Tim has created over twenty original works as a creator/director including: The Hawthorne Project, a six-year collaboration with writer/adaptor Elizabeth Banks building a trilogy of multi-layered multi-media events adapted from Nathaniel Hawthorne’s three American novels and The Opera Project, a five-year collaboration with writer Ruth Margraff and composers Matthew Pierce and Fred Ho creating a series of original new wave operas. Outside of the work he created with his own companies he has directed at The New York Shakespeare Festival and New Dramatists Guild, was a guest artist/teaching fellow at Harvard University, and has taught at New York University/Playwrights Horizons. He’s also sung in some bands, arranged and conducted a Cowgirl Chorus, and originated roles in two Robert Wilson shows: Hamletmachine (NY/European Tour) and Salomé (La Scala, Milan). He is a graduate of NYU/ Tisch School of the Arts.



***IN MEMORY OF
ALICE LAMKEN***



LIZZIE HAS BEEN DEVELOPED WITH THE ASSISTANCE OF TINY MYTHIC THEATRE COMPANY, HERE ARTS CENTER, TOOK AN AXE PRODUCTIONS (HILLARY RICHARD & PETER MCCABE), BRISA TRINCHERO/COREY BRUNISH (MAKE MUSICALS) AND VAN DEAN/KENNY HOWARD (BROADWAY CONSORTIUM).

LIZZIE WAS PRESENTED AT THE NATIONAL ALLIANCE FOR MUSICAL THEATRE'S FESTIVAL OF NEW MUSICALS IN 2010 AND FURTHER DEVELOPED BY VILLAGE THEATRE, ISSAQUAH, WASHINGTON (ROBB HUNT, EXECUTIVE PRODUCER • STEVE TOMKINS, ARTISTIC DIRECTOR). LIZZIE WAS PRODUCED BY THEATRE UNDER THE STARS, OCTOBER 2013.

THE WEST COAST PREMIERE OF LIZZIE WAS PRODUCED BY PORTLAND CENTER STAGE, CHRIS COLEMAN, ARTISTIC DIRECTOR. ORIGINAL EUROPEAN AND LONDON PREMIERE PRODUCED BY FREDERICIA THEATER AND SOREN MOLLER, DENMARK. TO PURCHASE RECORDINGS AND SHEET MUSIC, OR FOR MORE INFORMATION, PLEASE VISIT: WWW.LIZZIETHEMUSICAL.COM

**LIZZIE IS PRESENTED BY SPECIAL ARRANGEMENT WITH BROADWAY LICENSING GLOBAL.
[WWW.BROADWAYLICENSING.COM]**